

5 Bed Terraced

Darlington, United Kingdom



Offers over £375,000



5 Bedrooms



2.0 Bathrooms



Terraced

Property Description

Proudly positioned on one of the most highly regarded streets in Darlington's West End is this impressive Victorian Terrace boasting generously sized rooms and period charm.

Standing at the wrought-iron gateway you might imagine a 'forever home' full of character and heart inside. Open the beautiful wooden door and step inside to admire the high ceilings and find two large, inviting reception rooms. With plenty of space in the living room to gather the whole family there is no place cosier to spend quality time watching a film or playing a game.

Next you will find the dining room with beautifully restored original wooden floorboards. Here, French doors leading to the rear courtyard flood the room with natural light. Ideal for entertaining, this space takes you from hosting vibrant dinner parties to enjoying drinks in the garden on a summer's evening with friends.

The entrance hall leads to the stunningly well-thought-out kitchen by 'Oakstone Designs' complete with integrated appliances, lending well to the traditional style of this functional family home. Silestone work surfaces and bespoke units carry through into the utility room.

Venture upstairs to the first floor, comprising of two double bedrooms, a single bedroom and the family bathroom where you can unwind in peaceful surroundings. If you prefer a refreshing shower after a day spent 'working from home', the second floor hosts a second bathroom and an office along with two double bedrooms.

In the Summer months you are sure to be tempted outside into the perfectly pleasant South facing 'yarden'. Lounge in your own private sun trap with a good book in-hand.

The vendors love: How their treasured home has lent seamlessly to family life over the years.

We love: The abundance of character that will capture the hearts of buyers.

Council Tax Band: D (Darlington Borough Council)

Tenure: Freehold

Entrance hall

Wooden door to the front,

Under stairs cupboard,

1 Radiator,

Carpet flooring,

Living room

Double glazed bay window to the front,

Gas fireplace,

Wall lights,

1 Radiator,

Satellite television point,

Carpet flooring covering restored original floorboards,

Dining Room

French doors to the rear with window surround,

Gas fireplace,

1 Radiator,

Original wooden floor,

Kitchen

Double glazed window to the rear,
Stable door to rear garden,
Wall and base units,
Inset sink with drainer,
Hand spray hose,
Silestone work surfaces,
Range,
Gas and electric point,
Cooker hood,
Luxury vinyl tile flooring,
Integrated dishwasher,
Integrated fridge/freezer,
Integrated microwave,
1 Radiator,

Utility

Double glazed window to the side,
Wall and base units,
Door to kitchen,
Silestone work surfaces,
Stainless steel sink with drainer,
Plumbing for washing machine,
1 Radiator,
Luxury vinyl tile flooring,

FIRST FLOOR:**Landing**

Stairs from entrance hall,
Stairs to second floor,
Telephone point,
Carpet flooring,

Bedroom 1

Double glazed bay window to the front,
Feature fireplace,
1 Radiator,
Carpet flooring,

Bedroom 2

Double glazed window to the rear,
Built-in cupboard,
1 Radiator,
Carpet flooring,

Bedroom 3

Double glazed window to the front,
1 Radiator,
Carpet flooring,

Bathroom

Bath with mixer taps,
Wash hand basin,
storage cupboard,
WC,
1 Radiator,
Shaver point,
Luxury vinyl tile flooring,

SECOND FLOOR:

Landing

Loft access - ladders and partly boarded,
Skylight,
Carpet flooring,

Bedroom 4

Double glazed window to the front,
1 Radiator,
Wooden flooring,

Bedroom 5

Double glazed window to the rear,
1 Radiator,
Carpet flooring,

Study

Velux window to the front,
Radiator,
Carpet flooring,

Shower Room

Velux window to the rear,
Shower cubicle,
Wash hand basin,
WC,
Part-tiled walls,
Cupboard,
Radiator,
Carpet flooring,

OUTSIDE

Front Garden

Forecourt,
Sandstone path,
Slate gravel,
Raised flowerbed,

Rear Garden

South-facing,
Patio,
Shrubery,

Garage,

Garage

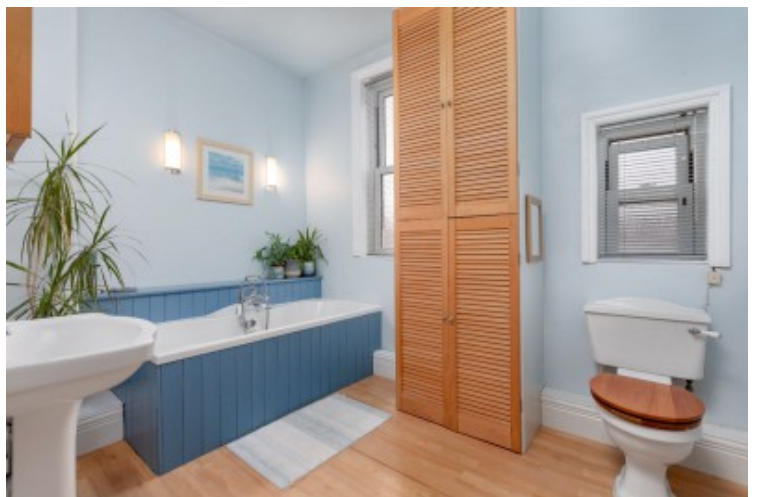
Wooden up and over door to access lane,

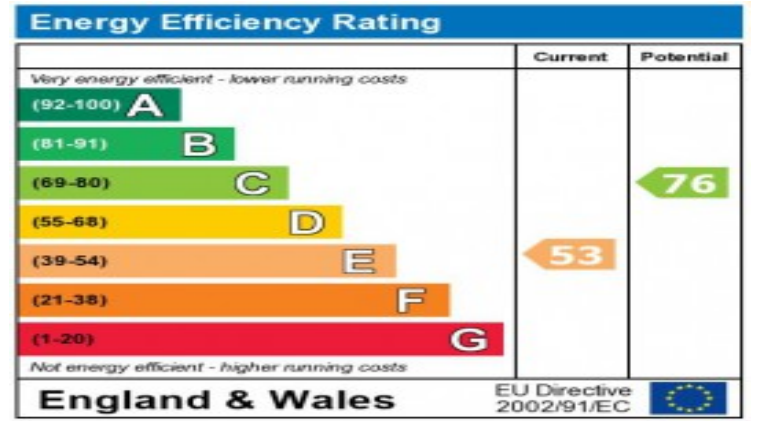
Double glazed window to the side,

Light,

Power,

Photo Gallery





The energy efficiency rating is a measure of the overall efficiency of a home. The higher the rating the more energy efficient the home is and the lower the fuel bills will be.

Property Details

- **Property Type:** Terraced
- **Location:** Darlington, United Kingdom
- **Price:** Offers over £375,000
- **Bedrooms:** 5
- **Bathrooms:** 2.0

Property Features

- Garage
- Great for school catchment area
- South facing garden
- Beautiful family home
- West End Location
- High Ceilings
- Home office
- Walking Distance To Town Centre